

Instructions for Air Jet Kit (DS830)

Fitting the Kit

1) Attach the air jets to the brush rods at both ends as shown in Figure 1. The brass tip should be close to the drum and rear roller, but not touching them. The position of the jet is marked on the brass tip, and should be pointing directly at the brush.



Figure 1

2) Connect the blue pipes between the small brass tee piece and the top of the air jet tubes.

3) Mount the flow regulator and shut-off valve to the side of the conveyor body as shown in Figure 2, and connect the blue pipe between the brass tee piece and the flow regulator.

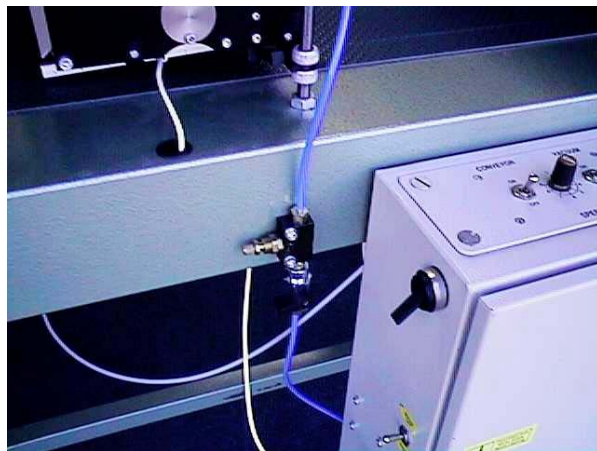


Figure 2

4) Cut any one of the blue pipes in the corner of the grey control cabinet and insert the push-in tee piece. See Figure 3. Connect a blue pipe between the tee piece and the shut-off valve, routing it through one of the mounting holes in the back of the cabinet.

Adjustment

Turn the flow regulator counter-clockwise to the fully open position, and then screw the adjuster clockwise four and a half turns. Open the shut-off and place some seed in the seed valley and rotate the drum. It is surprising how little air is required to flow through the brush to keep seeds from passing through. Small adjustments may be necessary, after which the brass nut on the flow regulator can be tightened to lock the flow rate. Use the shut-off valve to stop the air escaping when removing the brushes or changing seed.

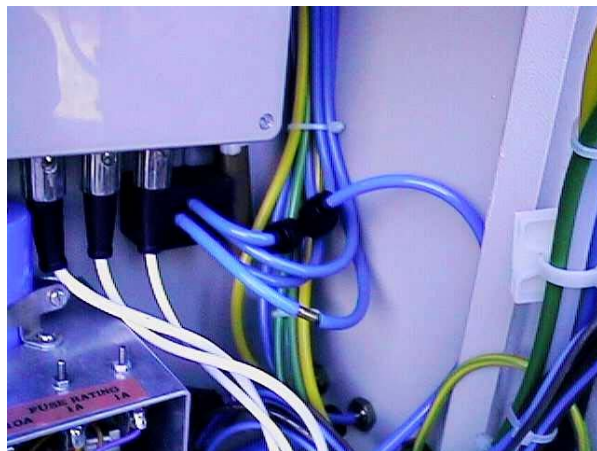


Figure 3